



The choice is yours.  
Royal Orchid Collection

THE 3-IN-1 CONCEPT

# THE 3-IN-1 CONCEPT

## 1. CHOOSE THE COLOUR/FINISH



NATURAL OILED

Our country house planks are factory-finished with air-dried oil. For commercial applications, we recommend an additional initial treatment.



SMOKED

The color of the oak is altered through a special smoking process. The duration of the smoking process is crucial for the resulting color change.



MATTE LACQUERED

Our matt lacquered floors are fully sealed and protected by a layer of lacquer.



SafeTop® provides a high-quality, matte surface with a raw wood appearance. The floor is pre-oiled and ready for immediate use.



## 2. CHOOSE THE GRADING



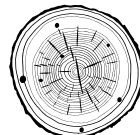
NATURAL

calm grade



STANDARD

slightly knotty grade



RUSTIC

knotty grade



SUPER RUSTIC

very knotty grade



### 3. CHOOSE THE FORMAT



#### RENOVATION PLANK

11/3 x 165 x 1,900 mm

This special 11 mm thick plank is ideal for renovation projects, as its low installation height allows it to be laid easily over existing subfloors. Thanks to its compact format, it creates a modern, harmonious overall appearance while showcasing the natural look of wood even in demanding refurbishment situations.



#### COUNTRY HOUSE PLANK

14/3 x 190 x 1,900 mm

A classic country house plank is characterized by its generous width, which allows the natural grain of the wood to stand out particularly harmoniously. It lends rooms a timeless, elegant appearance and creates a calm, high-quality overall look.



#### CASTLE PLANK

15/4 x 260 x 2,200 mm

The XL castle plank stands out with its exceptional length and width, emphasizing the original character of the wood in a particularly generous format. It creates a representative, spacious sense of room and gives large areas an impressive, exclusive appearance.

#### Packaging units Royal Orchid Collection

14/3 x 190 x 1,900 mm <i>2 layers per box, at least 600 mm</i>	8 Planks	= 1 Box	= 2.888 m <sup>2</sup>
	35 Boxes	= 1 Pallets	= 101.08 m <sup>2</sup>
	24 Pallets	= 40' Container	= 2,425.92 m <sup>2</sup>
15/4 x 260 x 2,200 mm <i>1 layer per box, at least 600 mm</i>	6 Planks	= 1 Box	= 3.432 m <sup>2</sup>
	27 Boxes	= 1 Pallets	= 92.664 m <sup>2</sup>
	26 Pallets	= 40' Container	= 2,409.26 m <sup>2</sup>
11/3 x 165 x 1,900 mm <i>2 layers per box, at least 600 mm</i>	8 Planks	= 1 Box	= 2.508 m <sup>2</sup>
	48 Boxes	= 1 Pallets	= 120,384 m <sup>2</sup>
	24 Pallets	= 40' Container	= 2,888.216 m <sup>2</sup>

Colours and dimensions may vary; images are for illustrative purposes only. Subject to change and errors excepted.



**Safetop®** technology stands for highest standards in surface processing. It is the perfect finishing to fulfil the wish for a natural raw timber effect.

The oxidative oiled surface is extremely matte and conserves the natural optics without any intensification. The flooring has an end finishing and can be used directly after the installation.

# Product structure and technical data

The Royal Orchid parquet collection combines natural aesthetics with a diverse selection of individual grading options. Whether natural, standard, rustic, or super rustic – each variation has its own distinct character and allows for customized interior concepts with a natural appeal.

For the perfect finish, several high-quality surface treatments are available: natural oiled, transparent oiled with SafeTop Technology, matt lacquered, as well as smoked natural oiled. All versions are brushed or lightly brushed, enhancing the authentic texture of the wood.

From a technical perspective, Royal Orchid also offers a wide range of options. The collection includes three plank formats that can be optimally selected depending on project requirements:

**Renovation plank:** 11/3 × 165 × 1.900 mm

**Country house plank:** 14/3 × 190 × 1.900 mm

**Castle plank:** 15/4 × 260 × 2.200 mm

The modern drop-down click system ensures comfortable and precise installation, enabling fast and secure handling. Royal Orchid thus becomes a collection that harmoniously combines visual variety, natural appeal, and practical usability across different formats.

## Specification

Oak single plank

## Layer structure (Wearlayer/Middlelayer/Backing)

**Renovation plank:** 3 mm / 5.5 mm / 1.5 mm

**Country house plank:** 3 mm / 9 mm / 2 mm

**Castle plank:** 4 mm / 9 mm / 2 mm

## Wood moisture content

7 % (+/- 2 %)

## Factory grading

**Natural:** calm grading with small knots and minimal sapwood content

**Standard:** slightly knotty grading with low sapwood content

**Rustic:** knotty grading with sapwood content

**Super Rustic:** very lively to rustic grading with knots and cracks, as well as natural color variation

## Packing

Neutral, wrap-around packaging, with product sticker affixed to the front. Installation instructions and care instructions are included in every other package.

## Surface

brushed + natural oiled

lightly brushed + natural matt lacquered

smoked + brushed + natural oiled

brushed + SafeTop Technology

## Thermal conductivity

0,14 m<sup>2</sup> K/W

## Thermal transmittance

0,12 m<sup>2</sup> K/W

## STRUCTURE

# 3-layer pre-finished parquet



SAWN VENEER



4-SIDED  
BEVELLED EDGES



DROP DOWN



SUITABLE FOR:  
HOT WATER  
UNDERFLOOR HEATING

4-seitige Fase

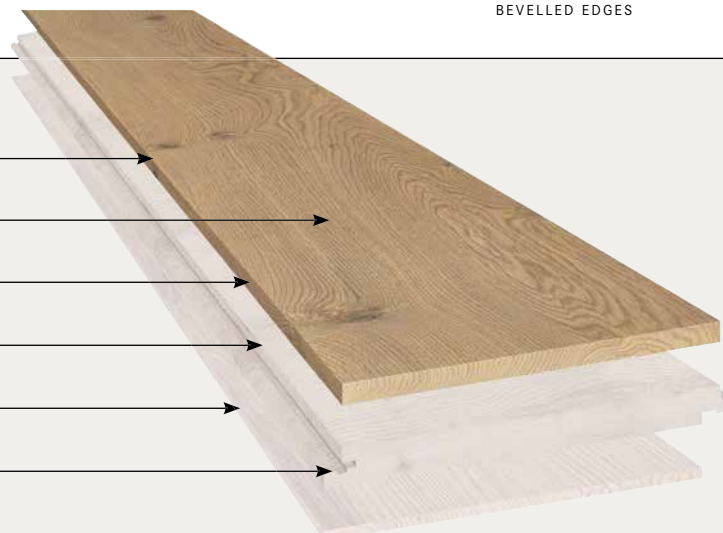
Oxidative oiled surface

Oak wearlayer, approx. 3 mm or 4 mm

Middlelayer Hevea 5.5 or 9 mm

Backing Eucalyptus 1.5 or 2 mm

Drop Down connection



**FLOOR!T<sup>®</sup>**

THE WOODEN FLOOR

Colour  
+ Grading  
+ Format  
= Your product

# FLOOR!T®

THE WOODEN FLOOR

COLLECTION

## ROYAL ORCHID

UNIQUE WIDE-PLANK FLOORING

F.W. Barth & Co. GmbH  
Fuggerstraße 25 | DE - 41352 Korschenbroich  
Tel. +49 2161 995599 | info@barth1873.de  
www.barth1873.de

### BARTH & CO

MARKETERS SINCE 1873

The picture shows **Oak Standard** - brushed, finished with transparent oil using SafeTop® technology

barth 1873-04-2026-P-Royal Orchid-1-EN

