

BITUS AB

One of the largest in Europe for wood preservation

The Bitus wood preservation facility is one of Europe's largest wood preservation operations.

The facility is also one of the most environmentally friendly.

From our facility in Nybro, we offer traditional wood preservation treatment in several different standards.

We are also the exclusive producer in Sweden of Linax, double wood treated with wood preservatives.

Please contact us with your request or contact your nearest reseller!



HK BITUS AB

STORA TORGET 3

SE-598 37 VIMMERBY, SWEDEN

TEL.: +46 (0)10-19 98 500

EMAIL: INFO@BITUS.SE

VISITING ADDRESS

WOOD PRESERVATION FACILITY

ORREFORSVÄGEN 49

SE-382 94 NYBRO, SWEDEN

TEL NO. DIRECT LINE: +46 (0)10-19 98 573

MORE INFORMATION AND INSPIRATION CAN BE FOUND AT:

WWW.BITUS.SE



WHY LINAX?

- Highly suitable for extreme climatic conditions
- Extended maintenance intervals
- Ready for immediate installation
- Dimensionally stable and shape retaining
- Excellent test results in terms of the product's ability to repel moisture
- Environmentally friendly, with uniquely low copper emissions
- 50 year rot protection warranty on panels, 20 year warranty on decking, etc.*
- 12-year product warranty *
- Certified Swedish raw materials
- Good overall economy
- Naturally beautiful as the natural structure of the wood shines through

Linax natural

* for the full warranty, see www.bitus.se

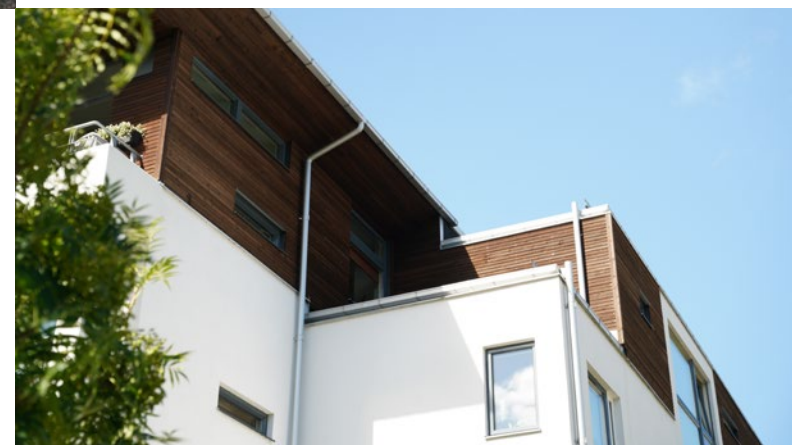


Linax natural that has greyed over time. Natural variations depending on environmental conditions.

Assembly:

- Linax is designed for installing outdoors and above ground only.
- Decking must be fitted with a spacing of approx. 4 mm to provide room for some swelling.
- All attachment devices must be stainless or acid-proof steel in harsh climates.
- Use lacquered plates, etc. or stainless steel materials. This is to prevent discolouration of the materials.
- All cut surfaces must be applied with Linax Linoljalasyr linseed oil glaze. This is to provide good protection against rot and moisture, and to meet the requirements of the warranty.

More information about care and maintenance can be found on our website www.bitus.se



Linax brown

Linax is ideal for:

- Facade panels
- Decking floors
- Noise barriers
- Wind guards
- Fences
- Playgrounds and parks
- Benches and garden furniture



Linax
By Bitus

Environmentally-
classified timber
with double wood
preservation



Customer focused

WE HAVE THE PRIVILEGE OF working with high-quality timber from the Swedish forests.

Bitus offers a unique and differentiated range of processed spruce and pine wood products to the global market. Bitus has traceability certificates and other certificates for compliance with FSC®C106624 and PEFC™.

Our wood preservation facility offers traditional wood preservation treatment as stipulated in a range of certificates, such as CTB, NTR and BS. Bitus offers the Linax product, a sustainable timber with double wood preservation.



Linax Brown profiled

Linax
By Bitus

The "extra everything" of wood preservation

Linax is our sustainable timber with double wood preservation treatment. Following the traditional wood preservation process, the wood is cooked dry under a vacuum while hot linseed oil is applied.

The oil can be pigmented. The colour pigments are cooked during the process and become beautifully transparent. We currently offer brown or natural which has no pigment. Linax Natural is beautifully golden when it is newly produced and acquires a natural grey hue over time. Linax Brown has excellent colour fastness.

Linax only includes raw materials that originate from certified Swedish forests. Linax has been assessed in Sunda Hus's Environmental Database and Byggarubedömningen's assessment. The production facility at Nybro complies with all applicable regulations.

Bitus for the environment and sustainability

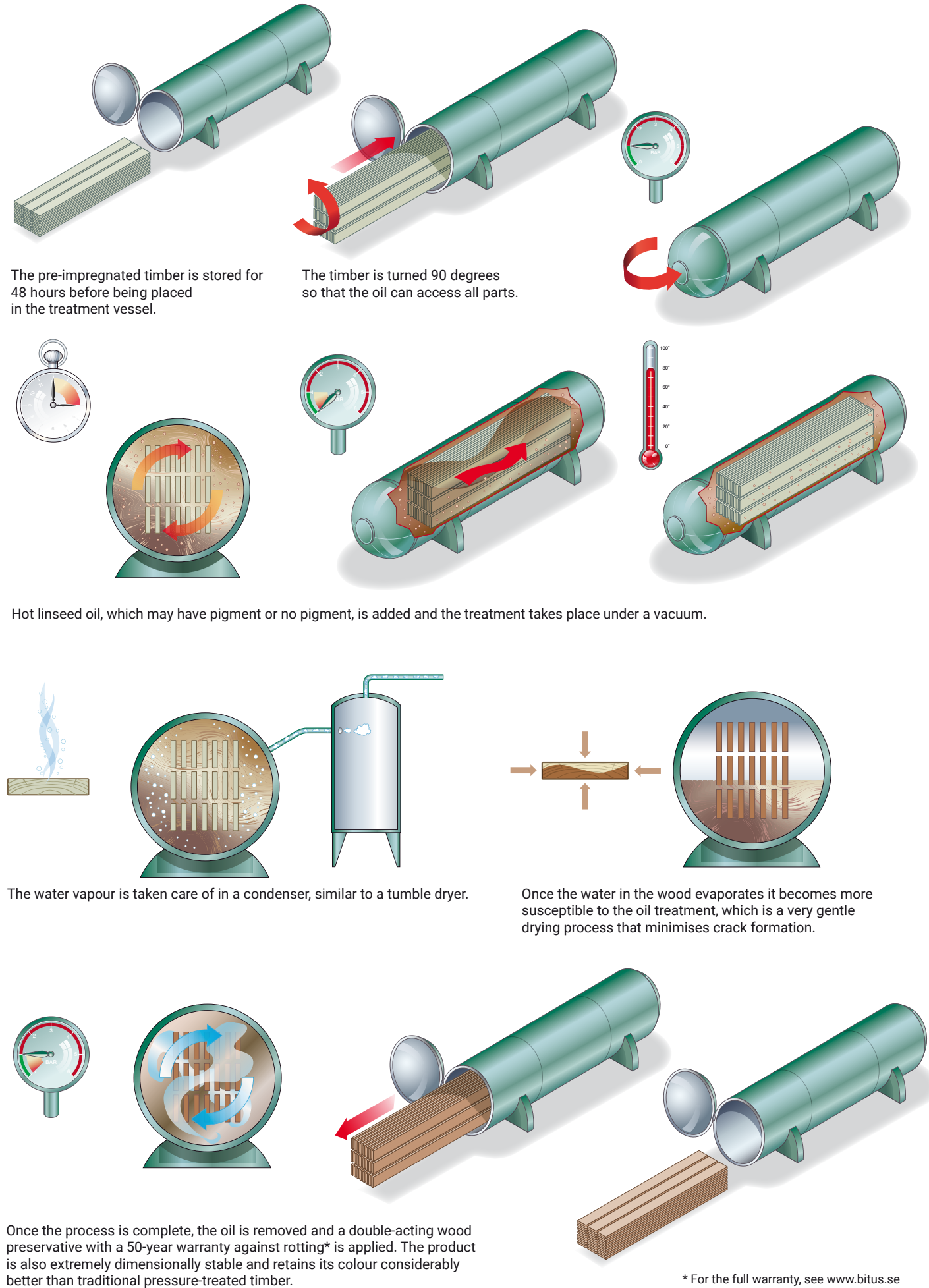
Bitus operates in Småland and we want to contribute to dynamic, local communities in connection with our production facilities. We do this by promoting local operators.

Our raw materials originate from responsibly managed forests. We use all of the raw materials, and those that do not become planks or boards are used for the production of pellets.

We work continuously to reduce our carbon footprint including by gradually converting to the latest technology and actively influencing our subcontractors.

Linax – double wood preservation treatment

LINAX PROCESSING STEPS:



* For the full warranty, see www.bitus.se

This is how it works: