

INSTALLATION AND CARE INSTRUCTIONS

AREA OF APPLICATION

EcoPUR design flooring is a hard-wearing, easy-care and decorative floor covering for private and commercial use. Due to its low installation height, it is suitable for new builds and renovations. The product can be laid in recreation rooms, in rooms with high humidity such as bathrooms, kitchens or cellars.

EcoPUR design flooring is suitable for hot water underfloor heating in accordance with DIN EN 1264 Part 3. Electric underfloor heating is not permitted.

NOTE

If possible, use primers, levelling compounds and accessories that are:

- low-emission
- solvent-free
- or are RAL UZ113 (Blue Angel) or EC1 certified.

INDOOR CLIMATE

When acclimatising the product to the room conditions and during installation, the temperature must be at least 18°C, but should not exceed 30°C. After installation, a healthy living climate ensures personal well-being. Temperatures of 20-22°C and a relative humidity of 35-65% are ideal. With underfloor heating, these values can already be achieved with a surface temperature of 24°C. Particularly in winter, you should monitor the humidity and take appropriate measures to increase it if necessary.

TRANSPORT AND STORAGE

EcoPUR design flooring must be left in its sealed packaging for 48 hours to adjust to the room temperature where it is to be laid. To prevent edge damage and bending of the planks, the packages must not be placed on their narrow sides or laid on wooden underlays, but must only be transported and stored lying flat on a level surface.

SPACING AND JOINTS

In rooms without strong sunlight, it can be laid without expansion joints up to a length of 20 metres. For large areas or complex floor plans (L, Z or U shape, „hourglass“, constrictions, doorways) or if heavy or fixed installations or superstructures hinder the free movement of the floating installation, the floor must be divided at a suitable point with an expansion joint. The floor is not suitable for areas subject to dynamic horizontal forces, such as those found in fitness studios or on sports and dance floors.

Expansion joints in the screed must be taken over in the top floor. A lateral clearance of at least 10 mm must always be maintained between the floor covering and the wall as well as to all fixed fixtures, steel door frames or heating pipes. Wooden architraves are shortened at the bottom and the floor covering is slid underneath.

On the walls, the gap is secured with wedges during installation. The wedges are later removed and the gaps concealed with suitable skirting boards, transition rails and pipe rosettes. Under no circumstances should the joints be filled with sealant.

For floating installation, the floor covering must be separated in the doorways. Directly adjoining surfaces with different temperatures should be separated if necessary. Intense sunlight can lead to thermal expansion. Suit-

able shading measures can prevent excessive heating.

BEFORE LAYING

The packages may only be opened immediately before installation. Always mix elements from several packages. Before laying, check the individual elements in good lighting for correct colour and structure and any damage. There is no entitlement to compensation for material that is recognisably damaged but has already been processed. Differences in colour and texture are typical of the material and are not grounds for complaint

Under furnishings with a high static or dynamic pressure load, load distribution must be ensured in accordance with the weight (load distribution plate).

HOW IS ECOPUR DESIGN FLOORING INSTALLED?

EcoPUR design flooring has integrated footfall sound insulation on the underside and is laid directly on the carefully laid 0.2 mm thick PE film without an additional insulating underlay.

With floating installation, the elements are connected to each other by the profiling without glue.

RECOMMENDED TOOL

You will need a folding rule, pencil, carpenter's square, cutter knife or lever cutter, a hole saw if necessary, spacer wedges and a tapping block.

SUBSTRATE CONDITION

The substrate must be free of old textile coverings, clean, permanently dry, level, firm and load-bearing. Loose, soft or yielding old coverings must always be removed.

No other impact sound underlays may be used. The evenness must comply with DIN 18202 Table 3 Line 4, but should not exceed 2 mm/m. Unevenness must be removed and depressions filled.

DIN 18365, VOB, Part C, floor covering work, DIN 18560, minimum requirements for screeds, DIN 18202, tolerances in building construction, TKB data sheet 7+8+9, BEB data sheet: "Bonding PVC floor coverings", "Assessing and preparing substrates, laying resilient and textile floor coverings", "Technical description and installation of PVC floor coverings". floor coverings", "Technical description and processing of floor levelling compounds" BEB data sheet "Interface coordination for heated floor constructions" must also be observed for floating installation.

INSTALLATION AND CARE INSTRUCTIONS

The following maximum moisture contents apply to new screeds:

Screed type	unheated	Floor heating
Cement	2,0%	1,8%
Calcium sulphate	0,5%	0,3%

(Reference CM measurement).

For underfloor heating, the maximum permissible heat output is 55 W/m² and must be evenly distributed over the surface. The surface temperature of heated screed must not exceed 28°C.

LAYING STEP BY STEP

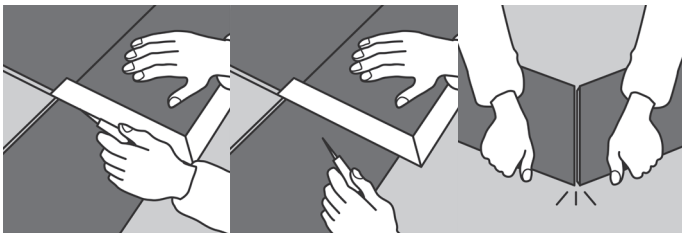
Lay the first plank with the tongue side facing the wall. The second plank is then angled into the first from the top.

LAYING DIRECTION →→→

1	2	3	4a
---	---	---	----

Make sure that the first track is laid exactly straight and secure the 10 mm wall distance with wedges, also at both ends.

The last element in the row is cut to fit precisely: score the decorative side with a cutter knife, then crease at this point and cut through completely.



FOLLOW-UP SERIES:

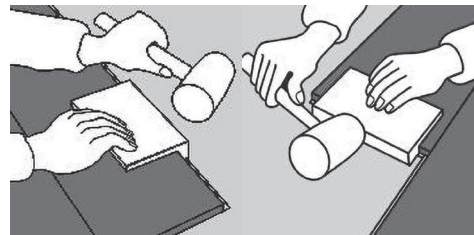
The offset of the end joints between two neighbouring rows must be at least 40 cm or 1/2 plank length. If the remaining section does not fit, simply use this as the start of the next row and use a new, matching cu.

Place the starting piece at an angle into the long side of the row already in place and lock it by gently folding it down. Angle in the next element, first on the front side, then on the long side.

LAYING DIRECTION →→→

1	2	3	4a
4b	5	6	

To ensure that the profiles interlock reliably, the head and longitudinal joints must be tapped with measured blows using the Vinytools tapping block and rubber mallet.



The elements of the last row are cut to size and inserted with a 10 mm gap to the wall.

FINAL THESESES

All wedges must be removed. Skirting boards, transition rails and pipe rosettes are fitted

CLEANING AND CARE

EcoPUR design flooring has an easy-care and very durable surface ex works. Incorrect cleaning agents, sand, acidic or alkaline substances, solvents, penny heels and small contact surfaces of furniture and furniture feet, metal and metal abrasion can attack the surface and lead to breakage, pressure marks, scratches or discolouration. Furniture must have clean glides, office chairs suitable soft castors. A suitable floor protection mat must also be laid under office chairs. Staining and aggressive substances must be removed from the surface immediately. The use of clean-off zones considerably reduces the ingress of dirt. Remove dust and loose dirt regularly by sweeping or vacuuming with a parquet nozzle.



www.blauer-engel.de/uz120

- low emissions
- low pollutant content
- no adverse impact on health in the living environment

